



Carbide Snowplow Inserts



Zigong CRD New Materials Co., Ltd



QUALITY ACCOMPLISHES THE FUTURE

Zigong CRD New Materials Co., Ltd

- **A subsidiary of Zigong Cemented Carbide Co., Ltd**
- **Dedication in carbide inserts production for more than 50 years**
- **The largest export base of snowplow inserts and mining inserts in China**
- **A well-known carbide renewable resources utilization R&D center**
- **An ISO certified company**





Zigong CRD New Materials Co., Ltd

Zigong CRD New Materials Co., Ltd(hereinafter referred to as "CRD"), was built in 2003 for the purpose of developing new business, and strengthening industry specialization, in Zigong Cemented Carbide Co., Ltd(hereinafter referred to as "ZGCC"). CRD is a collection of R&D, production, and sales, which introduced its products from Sichuan University.

There are three production lines in CRD, including cutting inserts, mining wear parts, and carbide recycling. The main products include various types of cutting inserts(brazed tips, mechanically clamped inserts(brazed tips, mechanically clamped tips, and indexable inserts), mining inserts (drilling bits, brazed inserts, geological exploration inserts, and other mining tools), wear resistant parts(snowplow insert , drawing die, punching die, carbide profiles, and other spare parts), and carbide raw materials (blended powder and carbide grit). Our products are widely used in machinery, mining, metallurgy, oil&gas, construction, iron&steel, transportation, and electronics with over \$20 million in sales. Over 60% of CRD's products are exported to North America, India, Pakistan, and other international markets.

CRD has become a strategical partner to more and more customers at home and abroad thanks to its reliable products and outstanding service. We're looking forward to a business cooperation with you.

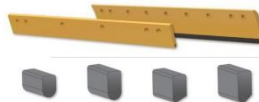
Carbide Snowplow Inserts Series

YG10CB snowplow carbide inserts use coarse tungsten carbide as raw material. They feature longer wear resistance, superior impact toughness, stability, and consistency. They are suitable for different severe conditions.

YG10CB snowplow carbide inserts are very popular among North American customers with over 30% marketshare.



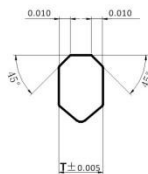
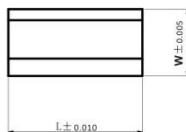
Carbide Insert blade



1. Main product series(table 1)

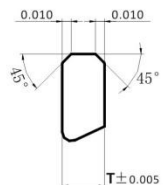
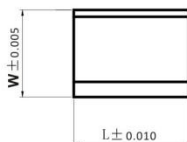
Type	Model number		Grade
Cusp Top	NA-08501 NA-08501CL NA-08501X NA-08501LX	NA-08501SX0.99 NA-08501LX1.115	YG10CB
NC	NC-02501 NC-08503 NC-08504 NC-08506 NC-12501 NC-12501C NC-12501CL NC-12501S NC-12502 NC-12502L NC-12502LX	NC-12502SX NC-12502S NC-12504 NC-12507 NC-12508 NC-13501 NC-13501CX NC-93504 NC-93505 NC-97501	YG10CB
NF	NF-02501 NF-02502 NF-07501 NF-12501CL NF-12501CS NF-12501CX	NF-13501CL NF-13503CL NF-14501L NF-14501S NF-14502L NF-14502S	YG10CB
NR	NR-03501 NR-03501C NR-03501CX NR-03501SX NR-07502	NR-13501 NR-13501S NR-13502S NR-93501 NR-93501SX	YG10CB

Type NA



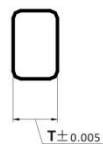
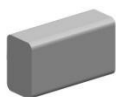
Type	Dimensions, inches		
	L	T	W
NA-08501	1.000	0.370	0.560
NA-08501CL	1.125	0.370	0.560

Type NC



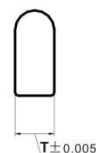
Type	Dimensions, inches		
	L	T	W
NC-12502	1.000	0.365	0.635
NC-12502S	0.990	0.365	0.635
NC-12502L	1.125	0.365	0.635

Type NF



Type	Dimensions, inches		
	L	T	W
NF-14502S	1.000	0.365	0.562
NF-14502L	1.125	0.365	0.562

Type NR

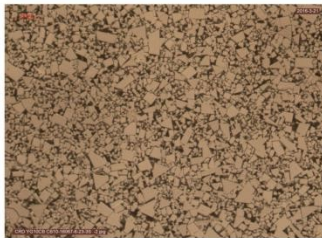


Type	Dimensions, inches		
	L	T	W
NR-13501	1.000	0.365	0.750
NR-13501S	0.990	0.365	0.750

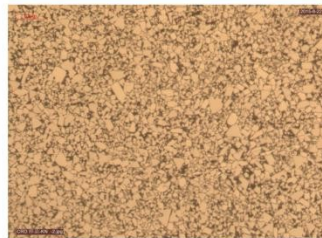
2. Main properties (table 2)

Manufacturer	Density g/cm ³	Hardness HRA	Grade size μm	Grade	TRS N/mm ²	Cobalt wt%	Impact resistance
YG10CB Standard	14.1~14.6	87.5~89.0	1.6~2.4	Coarse	≥2450	≥11.0	Good
CRD's snowplow inserts	14.4	88.0	2.0	Coarse	≥2450	≥11.0	Excellent
Typical inserts from other supplier	14.3	88.0	1.6	Medium	≥2450	≥11.0	Good

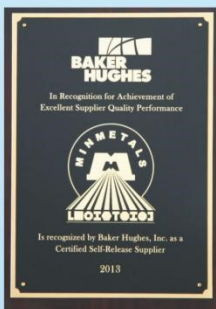
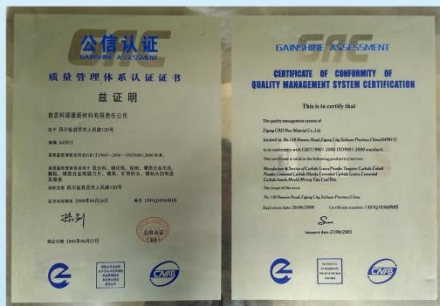
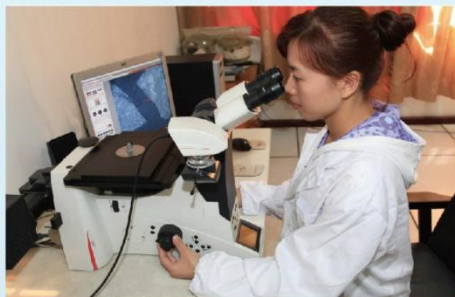
CRD's YG10CB inserts



**Typical inserts from
another supplier**



Note: the metallographs show CRD's grain size is coarser, which is beneficial to impact resistance.





Major Production Equipment





Marketing services

To create more value for users

- CRD's products are sold in over 40 countries, including China, Europe, USA, Southeast Asia, and the Middle East.
- About 60% of the products are exported to the international market.

Contact information:

Zigong International Marketing, LLC

38500 Chardon Road,

Willoughby Hills, Ohio 44094

P: 440-269-8160

F: 400-269-8170

M: 400-364-0330

E: xdsun@zigonginternational.com



Zigong CRD New Materials Co., Ltd

Add: 130 Renmin Road, Zigong, Sichuan, China

Zip Code: 643011

Web: <http://www.crd-new.com>

Email: 30168275@qq.com