

氧化钨

Tungsten oxide

氧化钨产品包括 WO_3 $WO_{2.90}$ $WO_{2.72}$ ，主要用途是作为生产钨粉的原料，也可用作染料和催化剂。

黄色氧化钨(WO_3)

Yellow tungsten oxide(WO_3)



黄色氧化钨呈浅黄色结晶粉末，颜色均匀一致，产品中无目视可见的夹杂物或团块。

Yellow tungsten oxide is a crystallized light yellow powder. The color is uniform and unanimous. There are no mechanical impurities and agglomerates visible.

普通型：

1、粒度

产品的费氏粒度15—24 μm 或由供需双方协商确定，产品均通过180 μm （80目）筛孔。

2、松装密度

黄钨粉末松装密度定为2.50~3.00g/cm³或供需双方议定；

超细型：

1、粒度

费氏粒度：2—8 μm 。

2、松装密度

松装密度： $\leq 2.0\text{g/cm}^3$ ，或由供需双方协商。

Common yellow tungsten oxide :

1、 Particle size

Fsss 15~24 μm or negotiated by both supplier and buyer. The product will be screened through 180 μm (80 mesh).

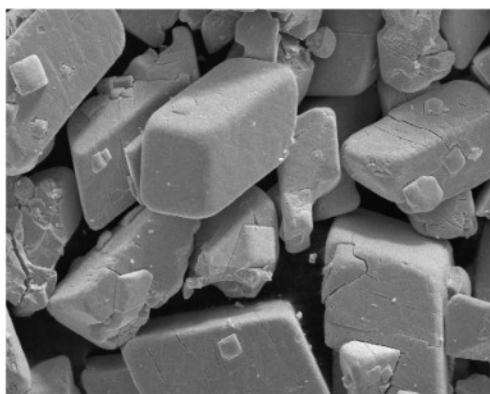
2、 Apparent density

The apparent density of WO_3 will be 2.50~3.00g/cm³ or negotiated by both supplier and buyer.

Super fine :

1、 Particle size: Fsss particle size: 2~8 μm .

2、 Apparent density: $\leq 2.0\text{g/cm}^3$, or negotiated by both supplier and buyer.



黄钨电镜形貌

Electron microscopic photo of crystal morphology

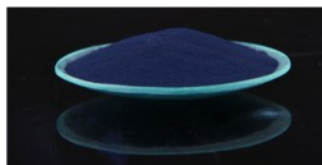
黄钨(WO₃) 化学成分

Yellow tungsten oxide(WO₃) Chemical composition

杂质含量 Content of impurities, (%)	元素 Element	最大值 Max	典型值 Typical value
		Al	0.0010
	As	0.0010	0.0005
	Bi	0.0001	0.0001
	Ca	0.0010	0.0005
	Co	0.0010	0.0005
	Cr	0.0010	0.0005
	Cu	0.0005	0.0001
	Fe	0.0015	0.0005
	K	0.0010	0.0005
	Mn	0.0010	0.0005
	Mg	0.0005	0.0005
	Mo	0.003	0.001
	Na	0.0010	0.0005
	Ni	0.0005	0.0005
	P	0.0008	0.0005
	Pb	0.0001	0.0001
	S	0.0010	0.0002
	Sb	0.0008	0.0005
	Si	0.0010	0.0005
	Sn	0.0001	0.0001
	Cd	0.0003	0.0001
	Ti	0.0010	0.0005
	V	0.0010	0.0005
	水不溶物 Insolubles in water	0.05	0.018

蓝色氧化钨 ($\text{WO}_{2.90}$)

Blue tungsten oxide powder ($\text{WO}_{2.90}$)

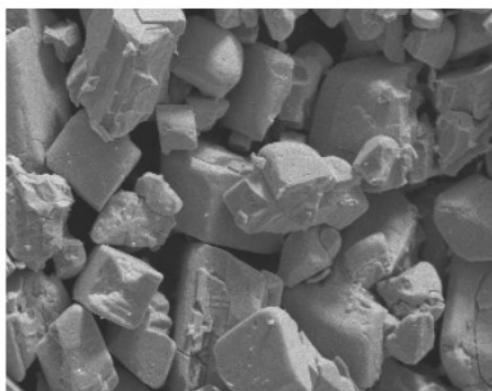


蓝色氧化钨呈深蓝色或蓝黑色结晶粉末，颜色均匀一致，产品中无目视可见的夹杂物或团块。

- 1、相成分：蓝钨的相组成中， $\text{WO}_{2.72}$ 不大于5%。
- 2、粒度：产品的费氏粒度12—20 μm 或由供需双方协商确定，产品均通过180 μm （80目）筛孔。
- 3、松装密度：蓝钨粉末松装密度定为2.20~2.80g/cm³或供需双方议定。

Blue tungsten oxide powder is a deep blue or dark blue crystallized powder. The color is uniform and unanimous. There are no mechanical impurities and agglomerates visible.

- 1、Phase composition: Maximal content of $\text{WO}_{2.72}$ is 5%.
- 2、Particle size: Fsss 12~20 μm or negotiated by both supplier and buyer. The product will be screened through 180 μm (80 mesh).
- 3、Apparent density: The apparent density of blue tungsten oxide is 2.20~2.80g/cm³, or negotiated by both supplier and buyer.



蓝钨电镜形貌

Electron microscopic photo of crystal morphology

蓝钨 (WO_{2.90}) 化学成分

Blue tungsten oxide powder (WO_{2.90}) Chemical composition

杂质含量
Content of impurities, (%)

元素 Element	最大值 Max	典型值 Typical value
Al	0.0010	0.0005
As	0.0010	0.0005
Bi	0.0001	0.0001
Ca	0.0010	0.0007
Co	0.0010	0.0005
Cr	0.0010	0.0005
Cu	0.0005	0.0001
Fe	0.0010	0.0005
K	0.0010	0.0007
Mg	0.0010	0.0005
Mn	0.0005	0.0005
Mo	0.003	0.001
Na	0.0010	0.0007
Ni	0.0007	0.0005
P	0.0007	0.0005
Pb	0.0001	0.0001
S	0.0005	0.0002
Sb	0.0010	0.0008
Si	0.0010	0.0005
Sn	0.0003	0.0001
Cd	0.0003	0.0001
Ti	0.0010	0.0005
V	0.0010	0.0005
烧损 Ignited loss	0.3	0.12